


Click Start to get started on a new Museum Box

Once you have started you will see a box just like the one to the right.

When you get to that box, you want to click on the bottom right corner that says **CHANGE BOX** to add how many layers and cubes you want.

Each Cube has 6 sides
You can have up to 8 cubes in a layer
You can have as many as 3 layers
A total of 24 cubes with 144 sides!

Create your own Museum Box



Click **START** above to begin creating your own Museum Box. You can add text, images, video and sound to the side of the cubes. To save your box you will need to register.

Stop and Try


Work with the person next to you

Go to the museum box website and create a one layered box with two cubes.


Please write down your task so I can take you back a slide to the instructions on how to do it!

Picture Right →
Is an example of what the boxes look like in a layer.
In this particular picture this box has one layer and two boxes.

The box you just made with your partner should look like this!



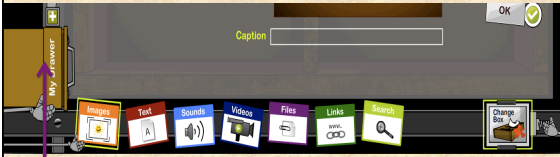
← **Picture left** shows the six different faces of one box.
You can edit each face of the box one at a time.



Lets try this!

- Click on one of your two boxes you have created.
- Consult your partner if you are having any difficulties
- Once you click on your box it should unravel to look like the box on the left hand side on the previous slide.
- Raise your hand if you need assistance and I or someone else who understands how to do this so far will come explain to you and assist you.

The My Drawer Feature allows you to save all the other 7 elements in one place for easy access throughout your museum box presentation.



For example, if you know the things you are adding to your museum box ahead of time, you can add all of your pictures, text, sounds, videos, files, links, and searches to the my drawer and not have to search for all of those things during each face of your box.

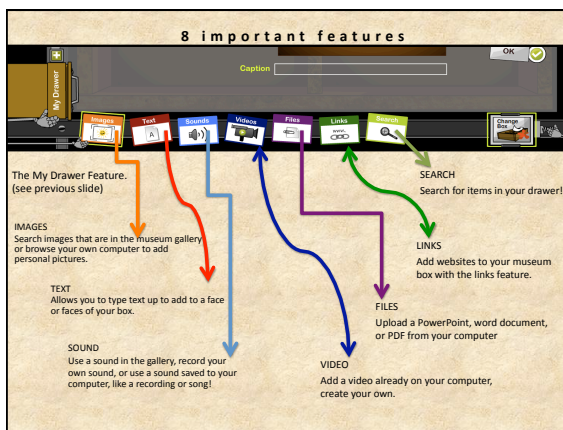
The my drawer feature saves anything you save to it throughout your entire presentation making it less fussy to search for things individually, and making it more easily available to you!

Any Questions so far?



Username and password

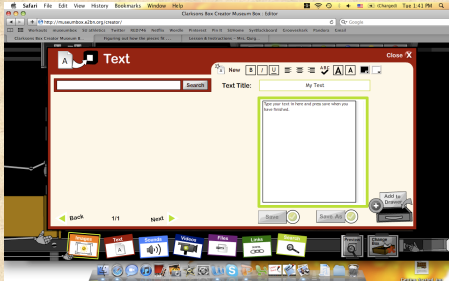
- You will need to create a username and password when you begin using the eight features in the next slides.
- You can either ask your technology specialist in your school to get a museum box account for your school, or you can choose other.
- For today's purposes we are choosing other.



Search images that are in the museum gallery or browse your own computer to add personal pictures.



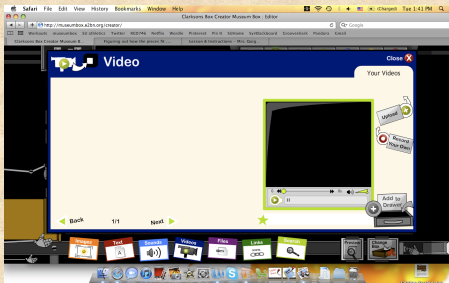
Allows you to type text up to add to a face or faces of your box.



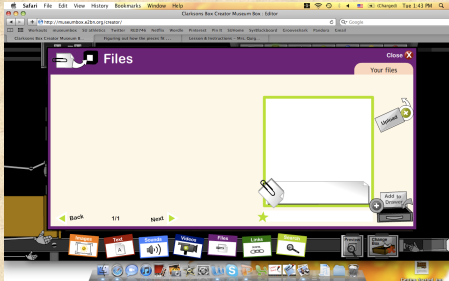
Use a sound in the gallery, record your own sound, or use a sound saved to your computer, like a recording or song!



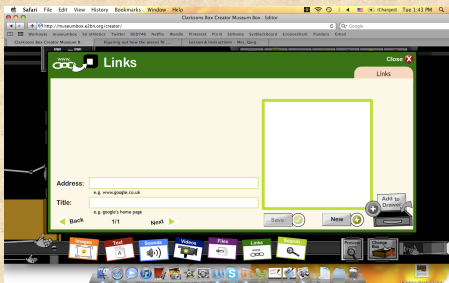
Add a video already on your computer, or create your own.



Upload a PowerPoint, word document, or PDF from your computer



Add websites to your museum box with the links feature.



Any Questions so far?

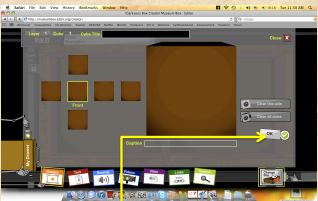


Click on a face of the cube to get started!

Four Easy Steps to Create a face of the cube!

Use the features below to begin constructing a face of your cube:

1. Give the cube a title and the face a caption.
2. Add pictures, text, sound, video, files, or links by clicking on the features and adding them.
3. When you finish adding information to one face click on another face and begin adding features to it.
4. When you have finished adding features to every face of the cube press ok and go onto your next cube following the same instructions.



Example of an autobiography cube

Add link to autobiography cube here.

Your task:

- Create a one layered two cube museum box.
- Topic: an autobiography
- Use writing prompts and ideas provided for you in your folder if needed!
- I will be walking around to assist as needed and answer any questions.
